



セブンスコード練習②

©KAI ICHIKAWA

Sheet music for the first system, measures 1-8. The key signature is one sharp (F#), and the time signature is 4/4. The notes and chords are as follows:

- Measure 1: Gmaj7, E7
- Measure 2: Am7, D7
- Measure 3: Bm7, E7
- Measure 4: Am7, D7
- Measure 5: Dm7, G7
- Measure 6: C7, F7
- Measure 7: Bm7, E7 (with a triplet of eighth notes)
- Measure 8: Am7, D7

Measure 9: Gmaj7 (with a half note and a whole rest)

分析(1)

Sheet music for the second system, measures 13-16. The notes and chords are as follows:

- Measure 13: Gmaj7, E7
- Measure 14: Am7, D7
- Measure 15: Bm7, E7
- Measure 16: Am7, D7

分析(2)

Sheet music for the third system, measures 17-19. The notes and chords are as follows:

- Measure 17: Gmaj7, E7
- Measure 18: Am7, D7
- Measure 19: Bm7(Cmaj7), E7

分析(3)

21 Gmaj7 E7 Am7 D7

23 Bm7 E7 Am7 D7

Analysis (3) shows two staves of music in G major. The first staff (measures 21-24) contains the chords Gmaj7, E7, Am7, and D7. The second staff (measures 23-26) contains the chords Bm7, E7, Am7, and D7. Arrows indicate fingerings or accents on specific notes.

分析(4)

25 Gmaj7 E7 Am7 D7

27 Bm7 E7 Am7 D7

Analysis (4) shows two staves of music in G major. The first staff (measures 25-28) contains the chords Gmaj7, E7, Am7, and D7. The second staff (measures 27-30) contains the chords Bm7, E7, Am7, and D7. Accents (>) are placed over certain notes.

よく使うセブンスコードと型

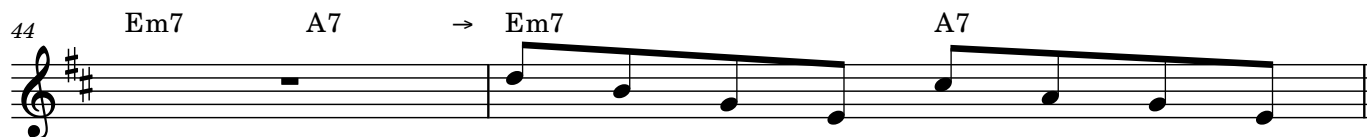
29 Gmaj7 Gmaj7 Gmaj7

33 Am7 Bm7 Bbm7 Am7 D7 Gmaj7

37 D7 Am7 D7 Gmaj7

41 C#m7b5 C#m7b5 F#7b9 Bm

This section displays various seventh chords and their patterns. It includes measures 29-32 (three Gmaj7 chords), measures 33-36 (Am7, Bm7, Bbm7, Am7, D7, Gmaj7), measures 37-40 (D7, Am7, D7, Gmaj7), and measures 41-44 (C#m7b5, C#m7b5, F#7b9, Bm). Triplet markings (3) are present under some notes.

ショート2-5に使う**Confirmation**