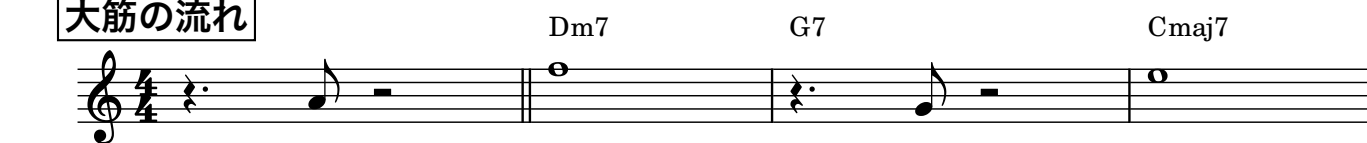




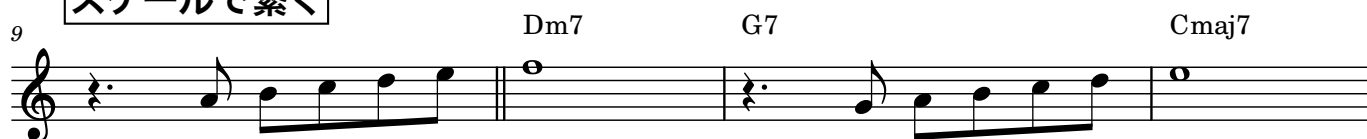
メロディの吹き方後編

©KAI ICHIKAWA

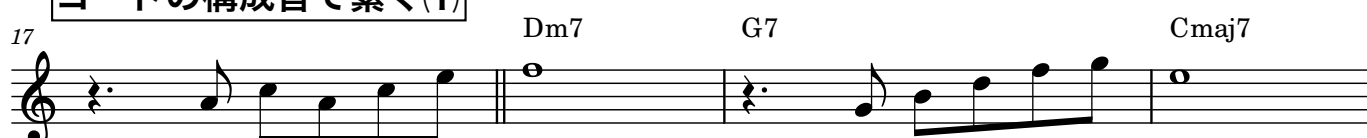
大筋の流れ



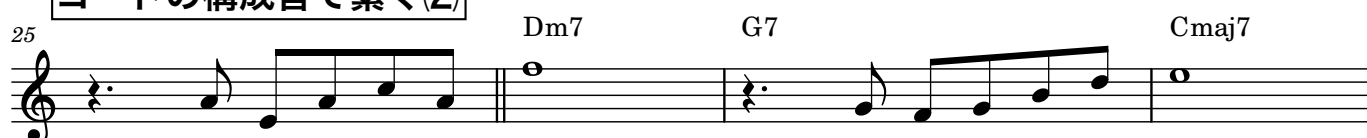
スケールで繋ぐ



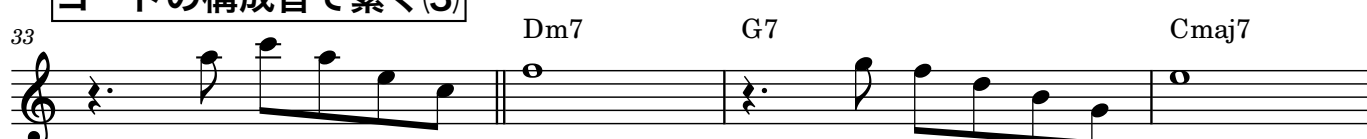
コードの構成音で繋ぐ(1)



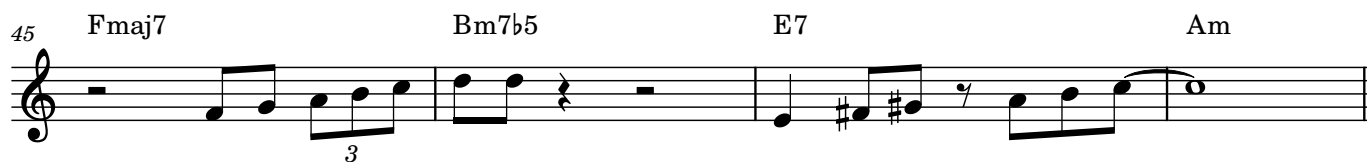
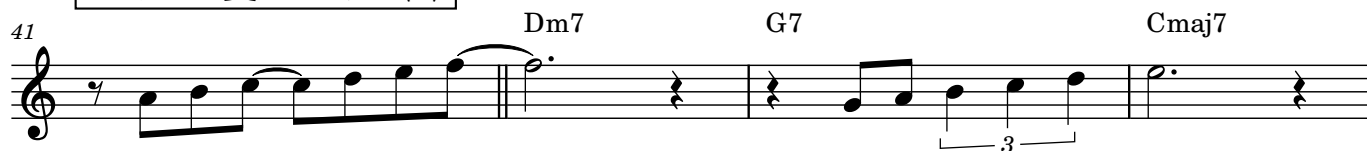
コードの構成音で繋ぐ(2)



コードの構成音で繋ぐ(3)



リズムを変えてみる(1)



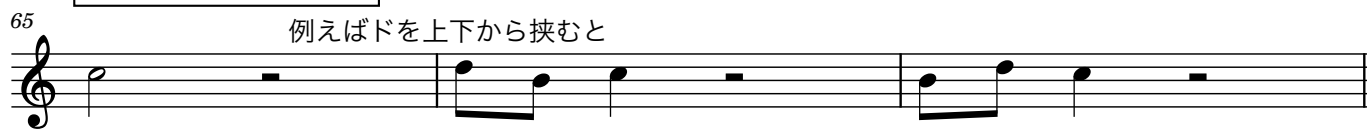
リズムを変えてみる(2)



半音下を足す



行き先の音を挟む



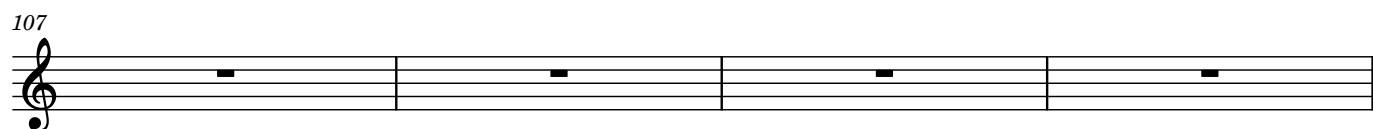
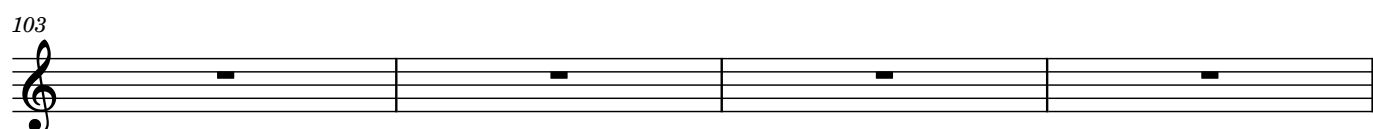
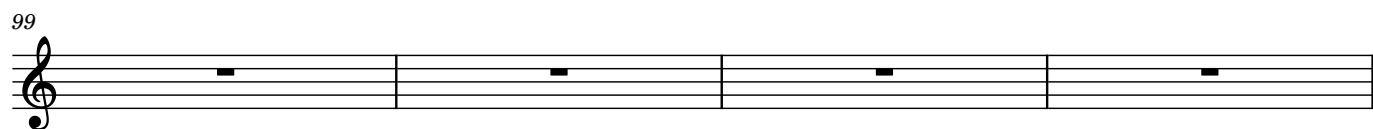
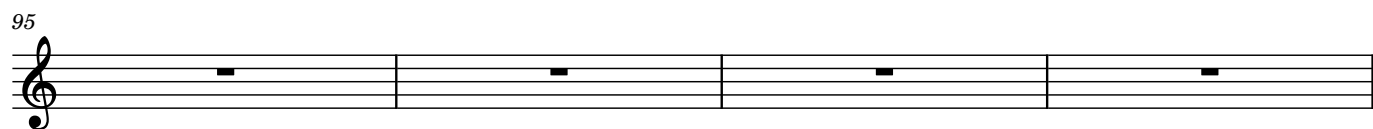
上下から挟む

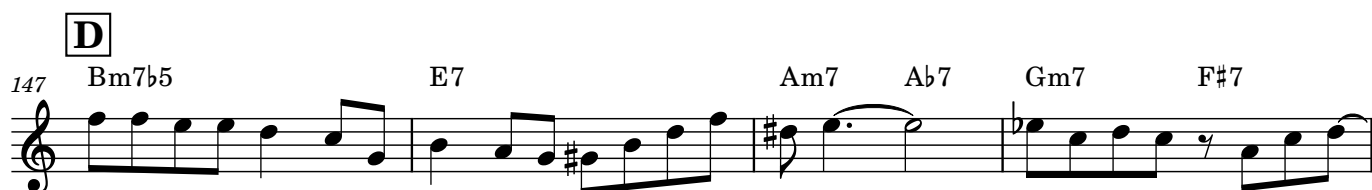
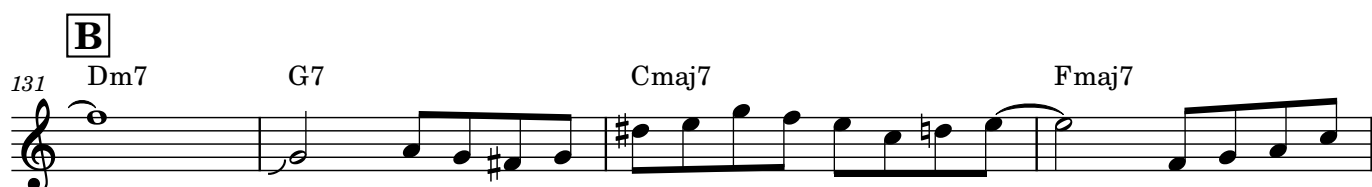
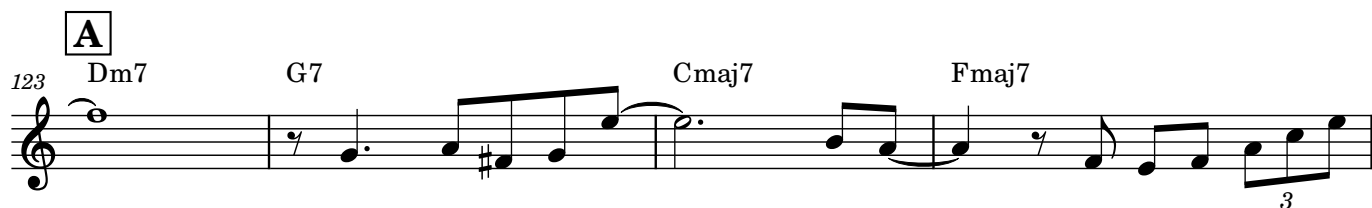
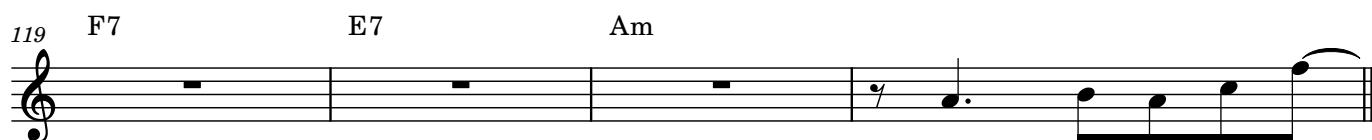


細かい装飾



装飾の重ねがけのような...





E

155 Dm7 G7 Cmaj7 Fmaj7

159 Bm7b5 E7 Am

F

163 Dm7 G7 Cmaj7 Fmaj7

167 Bm7b5 E7 Am

G

171 Bm7b5 E7 Am

175 Dm7 G7 Cmaj7 Fmaj7

H

179 Bm7b5 E7 Am7 Ab7 Gm7 F#7

183 F7 E7 Am

I

187 Dm7 G7 Cmaj7 Fmaj7