

# コードトーンとリズム

©KAI ICHIKAWA

## 本練習でのBluesのコード進行

1 2 3 4

G7 C7 G7 G7

5 6 7 8

C7 C7 G7 E7

9 10 11 12

Am7 D7 G7 D7

Detailed description: This section contains the first 12 measures of the exercise. It is written in treble clef with a key signature of one sharp (F#) and a 4/4 time signature. Measures 1-4 are marked with G7, C7, G7, and G7 respectively. Measures 5-8 are marked with C7, C7, G7, and E7. Measures 9-12 are marked with Am7, D7, G7, and D7. The notation consists of whole rests on a five-line staff.

## 出てくるコードと分散和音

13 14 15

G7 C7 E7

16 17 18

Am7 D7

Detailed description: This section contains measures 13-18. Measures 13-15 are marked with G7, C7, and E7. Measures 16-18 are marked with Am7 and D7. The notation includes eighth and quarter notes with slurs, and whole rests.

## コードトーンを吹く！

19 20 21 22

G7 C7 G7 G7

23 24 25 26

C7 C7 G7 E7

27 28 29 30

Am7 D7 G7 D7

Detailed description: This section contains measures 19-30. Measures 19-22 are marked with G7, C7, G7, and G7. Measures 23-26 are marked with C7, C7, G7, and E7. Measures 27-30 are marked with Am7, D7, G7, and D7. The notation includes eighth and quarter notes with slurs, and whole rests.

**間違いはどこ？**

31 G7 C7 G7 G7

35 C7 C7 G7 E7

39 Am7 D7 G7 D7

**Solo1**

43 G7 C7 G7

47 C7 C7 G7 G7

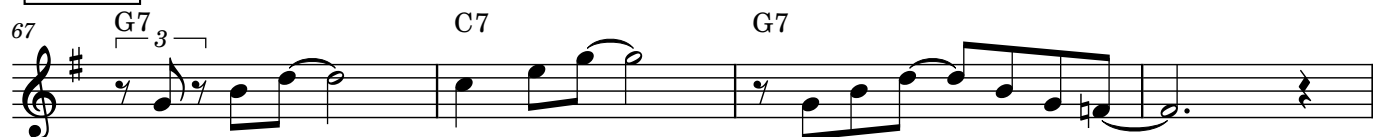
51 Am7 D7 G7 D7

**Solo2**

55 G7 C7 G7

59 C7 G7 E7

63 Am7 D7 G7 D7

**Solo3****Solo4**