

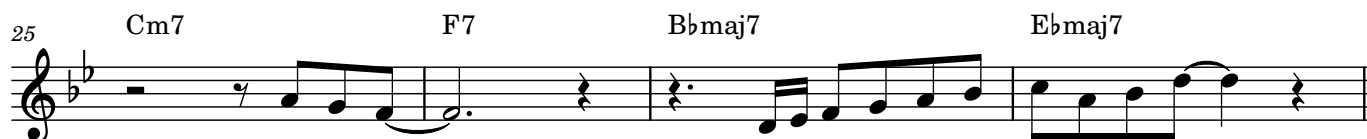
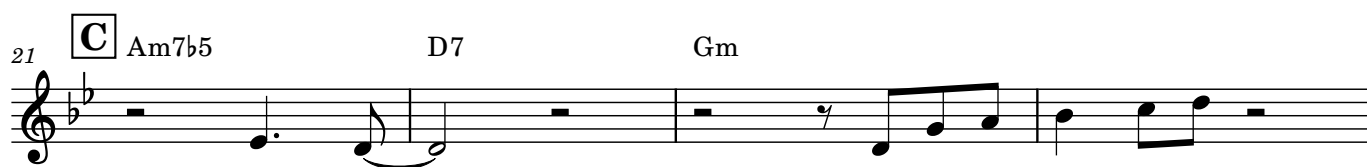
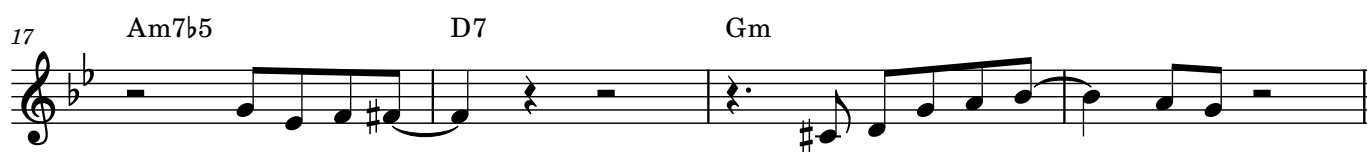
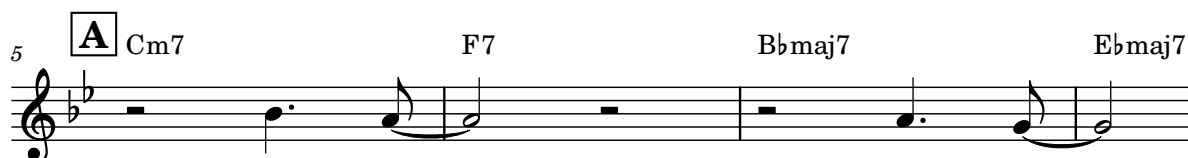
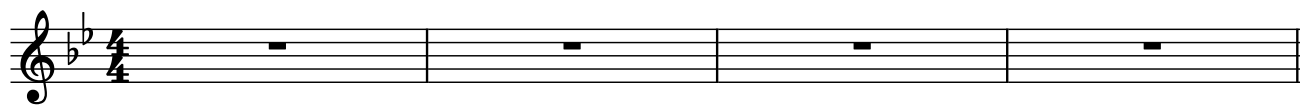
歌伴のコツ

©KAI ICHIKAWA

♩ = 160
Eb7

D7

Gm



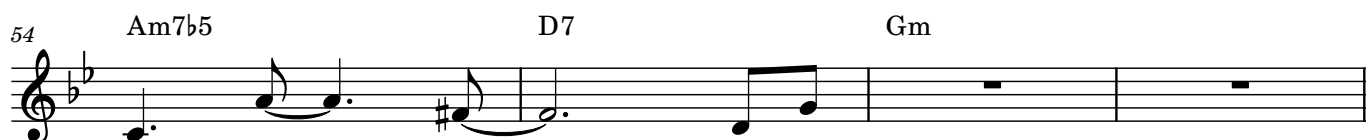
2



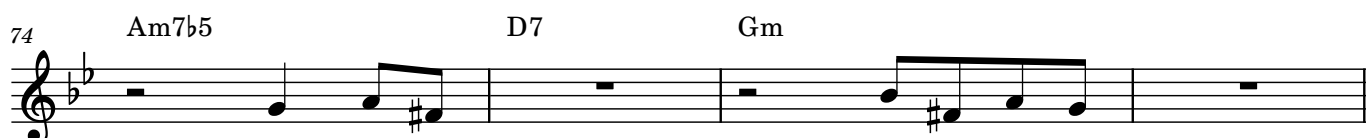
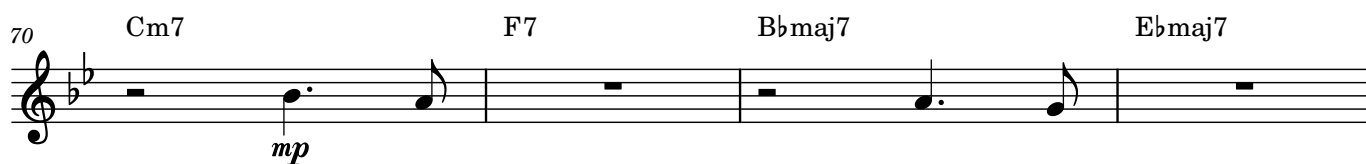
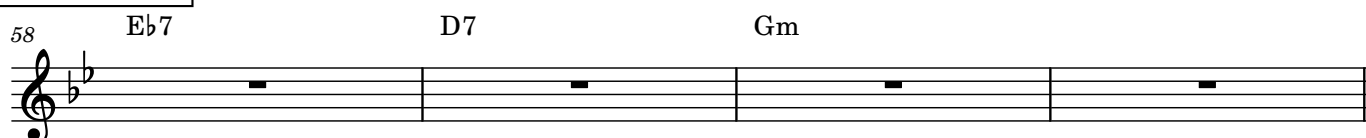
A2



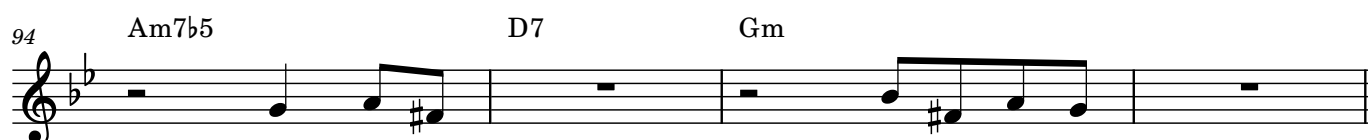
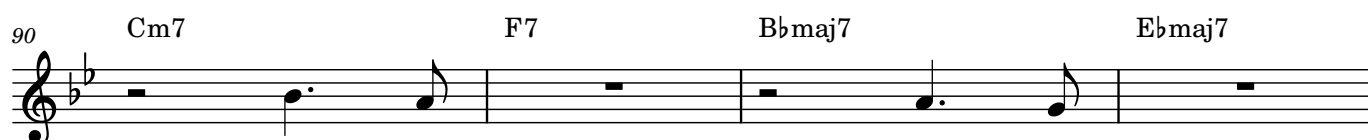
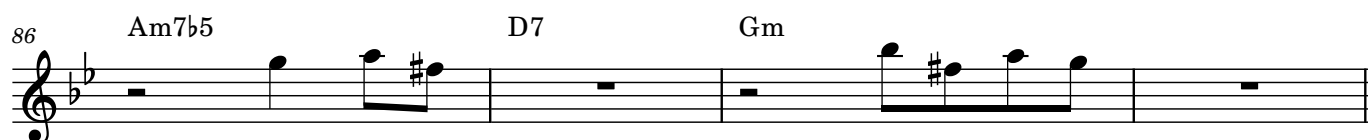
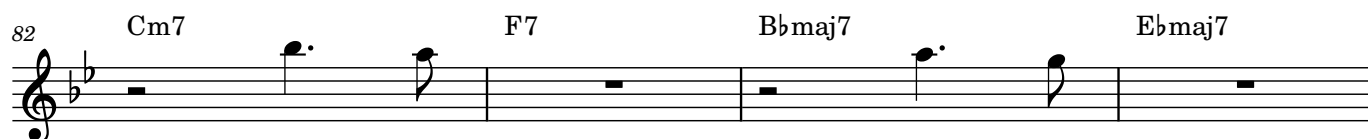
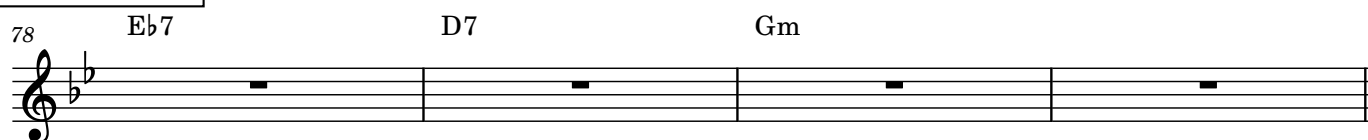
B2



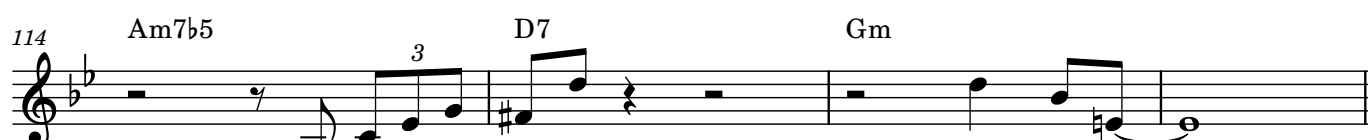
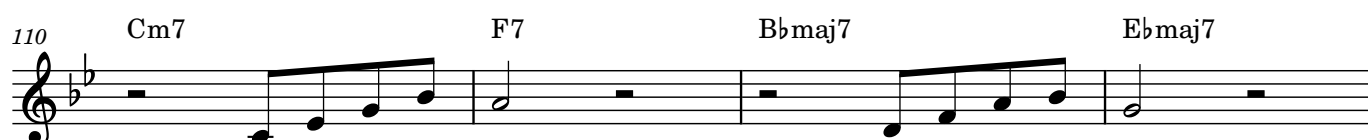
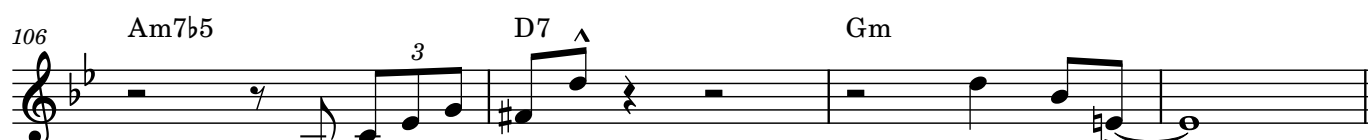
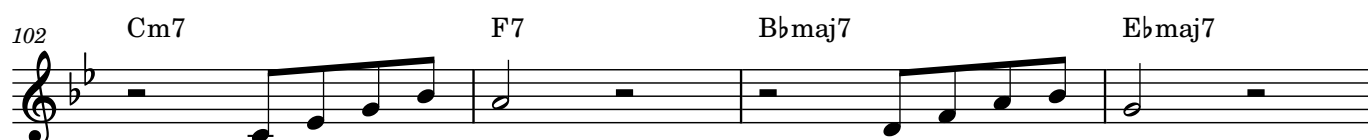
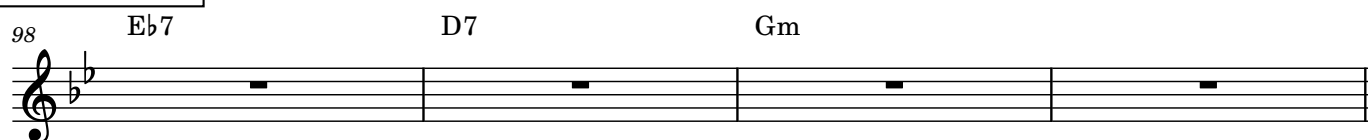
手法の比較



手法の比較2



手法の比較3



A

118 Cm7 F7 Bbmaj7 Ebmaj7

the fall-ing leaves drift by the win-dow the au-tumn lea-

123 Am7b5 D7 Gm

-ves of red and gold

下がる形

127 Cm7 sax F7 vo Bbmaj7 sax Ebmaj7 vo

leaves drift by the win-dow the au-tumn lea-

131 Am7b5 sax D7 vo Gm

-ves of red and gold

上がる形を混ぜる

135 Cm7 sax F7 vo Bbmaj7 sax Ebmaj7 vo

leaves drift by the win-dow the au-tumn lea-

139 Am7b5 sax D7 vo Gm

-ves of red and gold

